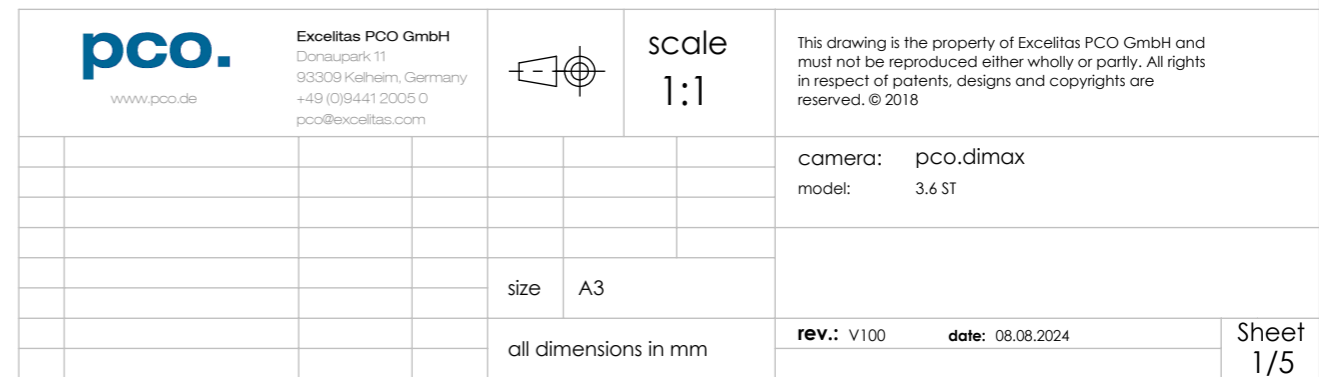
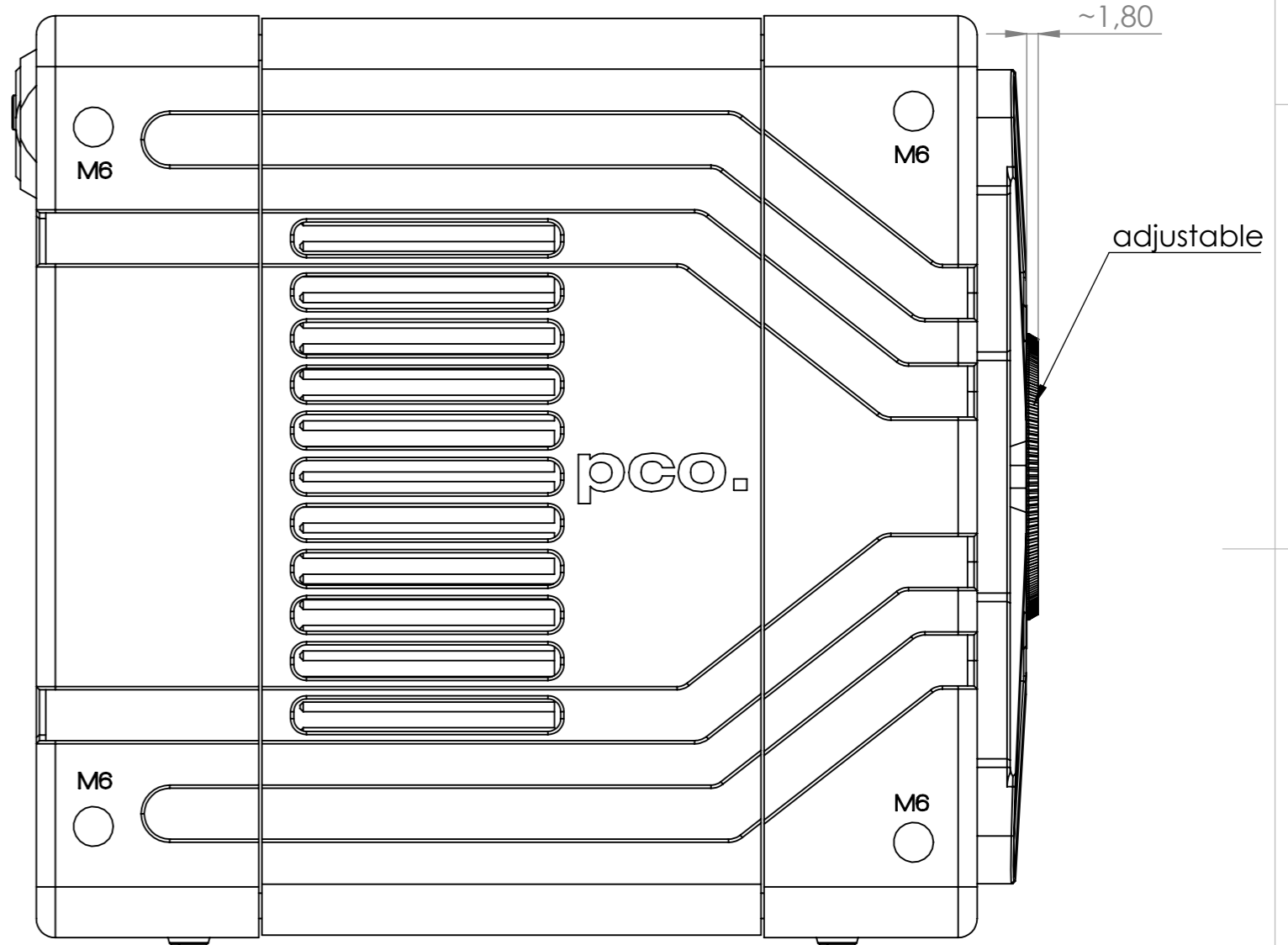
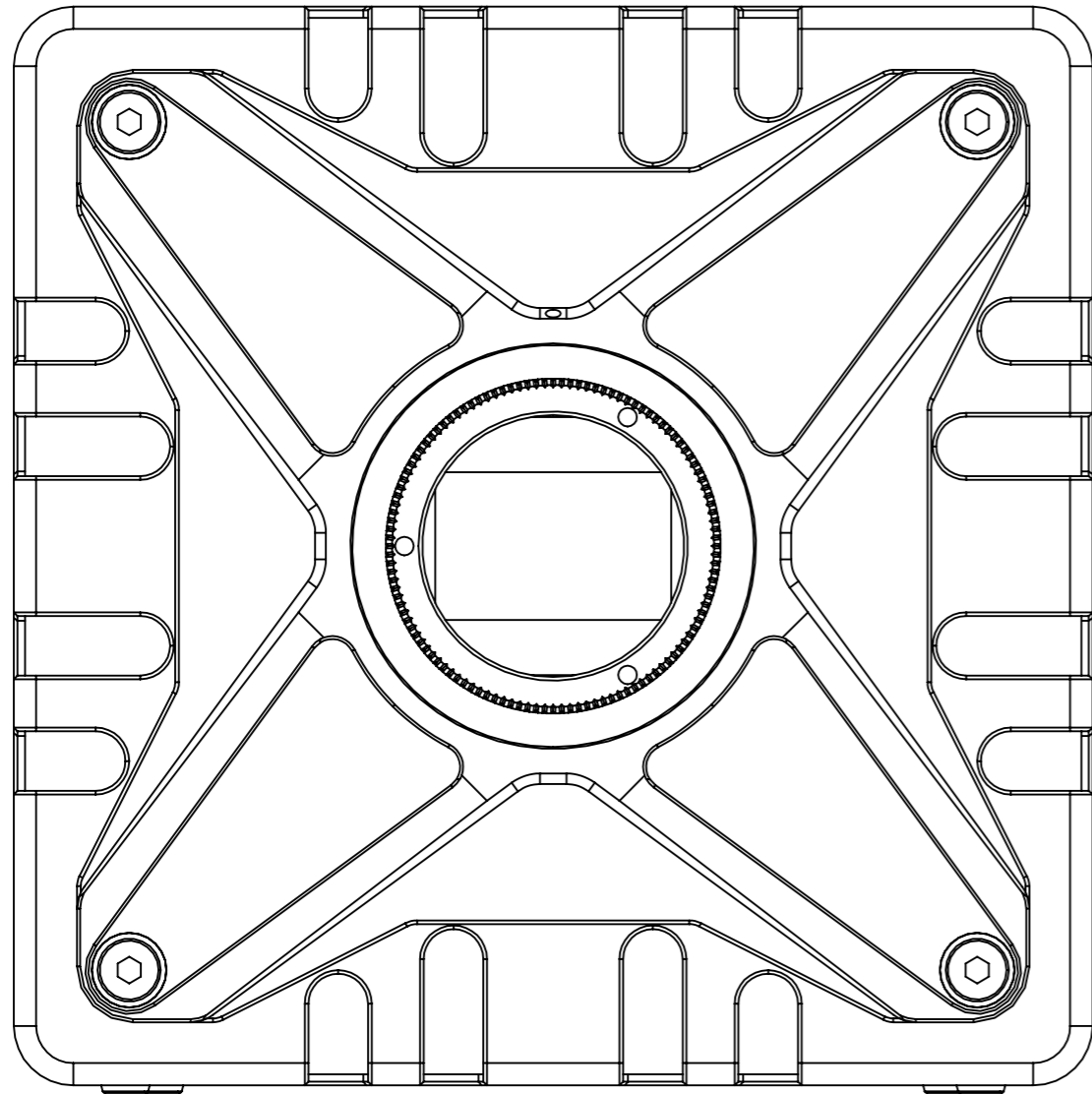


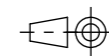
Technical drawing of the back of the C-mount adapter plate. The drawing shows the internal structure, including the four corner mounting holes and the central C-mount flange. The flange is marked with "C-mount" and "max 0.8 Nm". The plate has a square shape with rounded corners and a central circular feature.



TFL-mount



Excelitas PCO GmbH
Donaupark 11
93309 Kelheim, Germany
+49 (0)9441 2005 0
pco@excelitas.com



scale
1:1

This drawing is the property of Excelitas PCO GmbH and must not be reproduced either wholly or partly. All rights in respect of patents, designs and copyrights are reserved. © 2018

camera: pco.dimax
model: 3.6 ST

size A3

all dimensions in mm

rev.: V100 date: 08.08.2024

Sheet
2/5

This technical drawing shows a square plate with rounded corners. A central circular hole is surrounded by a flange with six screws. A cross-shaped reinforcement structure, consisting of four diagonal ribs meeting at the center, is visible. The plate has four corner mounting holes, each with a hexagonal nut. The drawing is a line art representation of a mechanical part.

